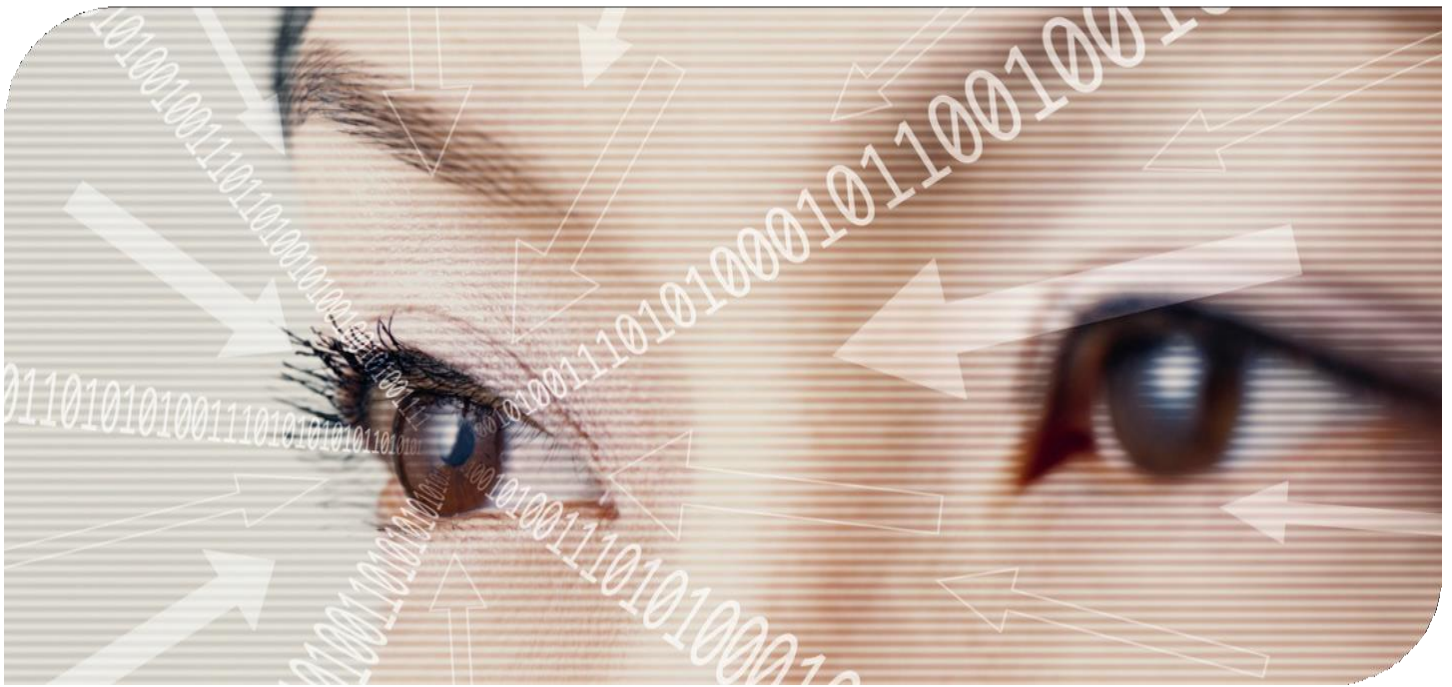




MORANDI

RIDER

- The Customer will organize the Event on the date, time and at the locations stipulated within the Object.
- The Customer will provide the elements absolutely necessary for the Service Provider to perform the activity undertaken under this contract in optimal conditions: Provide the access of the vehicle transporting the technical equipment to the location at least 10 hours before the Event.
- For an optimal development of the Event the Customer will also provide:
 - a) civilized conditions both on stage and backstage;
 - b) one room/ cabin for the Artists where they may stay until they start performing
 - c) Catering:
 - At airport arrival: 5 bottles of still water, 5 cans of Coke, 5 bottles of orange juice.
 - At the hotel – free minibar and free restaurant access!
 - Backstage: 5 bottles of still water and 5 bottles of sparkling water, 5 cans of classic Red Bull, 10 cans of Coke and plenty of ice, 1 bottle of Johnny Walker whisky, 1 bottle of semidry white wine, 1 bottle of semi-dry red wine, brown and yellow M&M bonbons, roasted peanuts, almonds, pistachio, 8 towels, 5 pillows, 2 couches, chairs.
 - d) system engineer – English speaking
 - e) at airport arrival: Tour Manager will receive one original copy of this contract signed by the customer and handed over by the person who is responsible for organizing the concert and has extensive knowledge about the concert and the riders.
- The Customer will notify the Service Provider regarding any elements or circumstances
- which could encumber the settled schedule of the Event, at least 10 hours before the Event.
- The Customer will provide the schedule of the Event to the Service Provider at least 14
- days before the Event.
- The Customer will ensure accommodation for 8 Single rooms within at least a 5*
- Hotel, board: breakfast, lunch and dinner for 8 persons from arrival to departure.



THIS RIDER COVERS SOUND AND BACKLINE REQUIREMENTS FOR MORANDI (WE WILL USE OUR MIXING CONSOLE).

IMPORTANT: WE NEED A UTP CABLE FROM THE STAGE (DJ AREA) TO THE FOH MIXING CONSOLE

MORANDI PLAY MUSIC WITH LOUD STAGE SOUND LEVELS. A GOOD AND POWERFUL PA-SYSTEM AND MONITORS ARE NEEDED TO REPRODUCE THE MUSIC CLEARLY AND WITHOUT SOUND SYSTEM DISTORTION. IT MUST PRODUCE 120dB SPL AT THE F.O.H console WITHOUT DISTORTION.

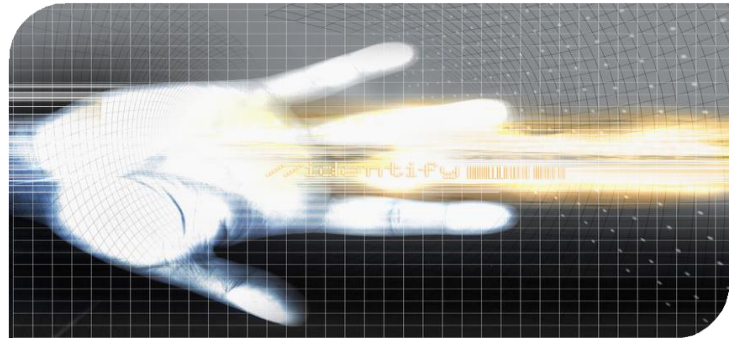
ALL CABLES AND EQUIPMENTS IN GOOD WORKING ORDER PLEASE!

LOCAL CREW:

A SYSTEM ENGINEER WHO IS FAMILIAR WITH THE SYSTEM AND NECESSARY TECHNICAL CREW FOR SOUND, BACKLINE AND LIGHTS SETUP BOTH SHOULD BE PRESENT AND WILLING TO HELP US WITH ANY QUESTION ABOUT TECHNIQUE AND HAVE THE PA AND MONITORS READY BY THE TIME OF MORANDI CREW ARRIVAL.

FOH

WE NEED 5 CHANNELS IN FOH CONSOLE: 2 FOR L / R SUM, 1 FOR SIDE FILLS AND 1 FOR DJ FILL. OUR MIXING CONSOLE WILL BE LOCATED ON THE STAGE IN THE DJ AREA



1.0. The production

Please note that these requirements are the minimum required for this production. Circumstances may dictate some alteration of these numbers and times. You will be notified of this necessity well in advance.

1.1 Power requirements

We require power as follows:

- all power must be 1-phase + neutral + ground
- between ground and neutral must be a potential of zero volts !
- sound power must be separate in any case ○ if power comes from generators we require one generator for sound. - If the power comes from the city network there also must be a separation of the sound and light power.

1.2 Sound, PA-system We require a high quality, stereo, three or four way, horn loaded active PA-system with extra subs and a minimum of 2x 5000 watts per 1000 people (120 dBSPL full range at FoH position). The PA-system must be flown in any case. The system must produce a clear, clean sound. In venues of more than 8.000 people capacity we require a delay-system that needs to be flown as well. All seating-/standing-areas of the venue must be covered equally by the sound system. We prefer.: LAcoustic, Meyer Sound, JBL-Vertec, d&b audiotechnik, EAW, Turbosound

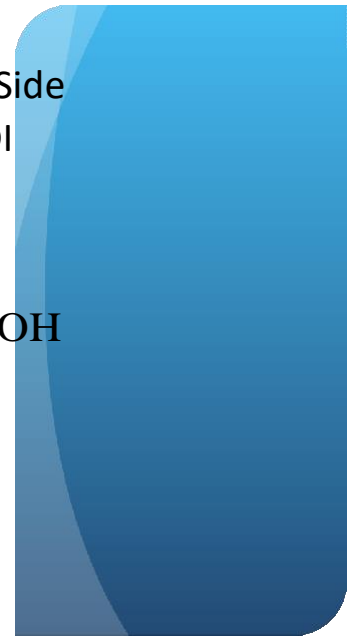
1.3 Front of House

FROM FoH we require 5-Mono-Channels : 2 For L/R SUM , 1 for Side Fills and 1 for DJ Fill. This Channels is for sole use of the MORANDI only !!!

MORANDI'S CONSOLE WILL BE LOCATED ON THE STAGE, CONNECTED TO THE UTP CABLE AND AT FOH AREA WILL BE CONNECTED TO A (OUR) WIRELESS ROUTER.

--- 1x talkback to stage (microphone with switch)

- 2x power connector, 220V 16A German standard "Schuko"
- Our Console will be used also for the mix monitors.
-
- **1.4. Monitor**
- * The monitor mix will be set from the Our Console and send to FOH Console..
- --- 2 x In Ear Monitor IEM for the Main Vocal (Sennheiser, Shure) + Headphones
- - 2 x side fills three way active system, minimum 3000 watts each.
- - 1 x dj fill minimum 2000 watts 2x12"or10"+2" and 2x Sub 2x18"
- - 4 x monitors in 2-ways of minimum 800W with low speaker of 15"4xMcCauley
(Meyer Sound, Nexo, Martin)



1.4.1 Monitor Outputs & L/R send

AUX	SEND FROM MORANDI'S CONSOLE	MONITOR TYPE	NOTE
1	LEFT CHANNEL MAIN OUT		TO FOH CONSOLE
2	RIGHT CHANNEL MAIN OUT		TO FOH CONSOLE
3	FRONT MONITOR	WEDGE MONITOR	TO FOH CONSOLE
4	L/R SIDE FILL	WEDGE MONITOR	TO FOH CONSOLE
5	DJ FILL	WEDGE MONITOR	TO FOH CONSOLE

+ 6 XLR XLR CABLES FOR PERSONAL MONITORING

SYSTEM

2.1.0. Plug-box, sub-snakes, cables, stands, microphones

We require a complete and functional stage-cable- and plug-box-system.

- 2 X Stage-box: 8 channels send and minimum 2 return (one will be located in the percussion area and the other in the piano area)
 - 16 TRS-TRS cable (minimum) – 10 meters Length
- plenty microphone (XLR)-cables - all microphone stands as written in the microphone-list.

- 1 X UTP CAT 5 CABLE FROM THE STAGE (DJ AREA) TO THE FOH MIXING CONSOLE

*After sound check under no circumstance the xlr-cables will not be disconnected from the stage box after until the end of show.

2.1.2 Back Line

- 1x guitar stand
- 5 x Stereo DI-box or 10 DI Mono ACTIVE + **6 x DI box PASSIVE**
- 1x Yamaha Motif XS 8 (KORG KRONOS, ROLAND FANTOM G8) This keyboard must necessarily have 88 keys with HAMMER ACTION KEYS , + sustain pedal
- 1x AKAI MPK 61 (M-AUDIO AXIOM61, M-AUDIO CODE 61) keyboard midi controller with **61 keys or more** + sustain pedal
- * if you don t have Yamaha keyboard and Akay midi controller you can replace with 2 Korg Kronos**
- 1x Dj desk 2/1m with 1,2 height
- * Dj Desk will be surrounded by a black cloth so that the legs of the dj will be covered fully.
- 6 x Keyboard stand + 1x Drum sticks set

2.1.3 *percussion* - 3 x Congas (1 x quinto, 1 x conga, 1 x tumba) with stand

- 2x Timbales 13" / 14" with stand
- 2 x Tom-Toms(10",13") with stand
- 1 x Percussion table
- 4 x Cymbals stand with boom
- 1 x Cymbal set (8"-10",14",18")
- Drums carpet (2 x 3 meter)

2.1.4. *stage technicians*

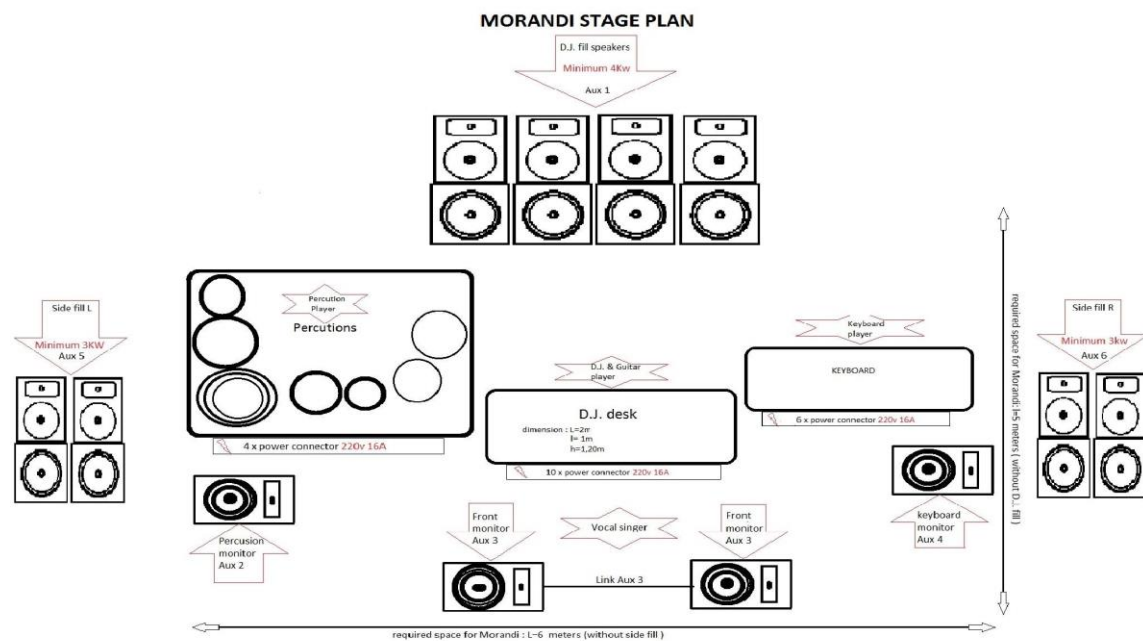
We require ONE technician – english speaking ! --- for cabling and taking care of patching the microphones as written in the microphone-list.

INPUT LIST

SNAKE LINE	SOURCE	STAGE POSITION & VCA (DCA)	MIC TIPE	48V	MIC STAND	INSERTS
01	Conga 1	Perc/1	Audio-technica Pro35	ON	Clamp	Gate/COMP
02	Conga 2	Perc/1	Audio-technica Pro35	ON	Clamp	Gate/COMP
03	Timbale 1	Perc/1	Shure SM57	OFF	Clamp	Gate/COMP
04	Timbales 2	Perc/1				
05						
06	Tom 1	Perc/1	Audio-technica Pro35	ON	Clamp	Gate/COMP
07	Tom 2	Perc/1				
08	OH 1	Perc/1	Condenser mic	ON	Clamp	COMPRESSOR
09	OH 2	Perc/1	Condenser mic	ON	Clamp	COMPRESSOR
10	Drum Machine	Perc/1	D.I.	ON	Jack	COMPRESSOR
11	Drum Machine	Perc/1	D.I.	ON	Jack	COMPRESSOR
12	GTR L	DJ Desk /3	D.I.	ON	Jack	COMPRESSOR
13	GTR R	DJ Desk /3	D.I.	ON	Jack	COMPRESSOR
14	Key L AKAI MPK 61	Keyboard /4 DJ AREA	D.I.	ON	Jack	COMPRESSOR
15	Key R AKAI MPK 61	Keyboard /4 DJ AREA	D.I.	ON	Jack	COMPRESSOR
16	Key L MOTIF XS8	Main Vocal /2	D.I. PASSIVE	ON	Jack	COMPRESSOR
17	Key R MOTIF XS8	Main Vocal /2	D.I. PASSIVE	ON	Jack	COMPRESSOR
18	Spare	DJ Desk	Wireless Shure BETA 58	OFF	Stand	COMPRESSOR
19	D.J. - VOX	DJ Desk /5	Shure SM58	OFF	Stand	COMPRESSOR
20	KEY - VOX	DJ Desk /5	Shure SM58		Stand	COMPRESSOR
21	Q-VOX	Vocal singer /6	Wireless Shure BETA 58A	OFF	Straight stand	COMPRESSOR
22	DJ second Line	DJ desk /	D.I. PASSIVE			
23	DJ Metronome	Dj Desk	D.I. PASSIVE	ON	Jack	

SNAKE LINE	SOURCE	STAGE POSITION & VCA (DCA)	MIC TIPE	48 V	MIC STAND	INSERTS
24	SAMPLER L	DJ desk /8	D.I.	ON	Jack	COMPRESSOR
25	SAMPLER R	DJ desk /8	D.I.	ON	Jack	COMPRESSOR
26	FLUTE L		D.I. PASSIVE	ON	Jack	
27	FLUTE R		D.I. PASSIVE	ON	Jack	
28						
29						

SUGGESTED STAGE Plot AND SETUP



STAGE

STAGE SIZE A MINIMUM OF 6 x 4 METRES.

ENOUGH AC POWER ADAPTORS/TRANSFORMERS.

IMPORTANT

THE EQUIPMENT SHALL BE SET UP AND CHECKED FOR ARTIST'S ARRIVAL. EXPERIENCED SOUND ENGINEERS MUST ASSIST MORANDI'S SOUND ENGINEER FROM GET-IN AND DURING THE SHOW . THREE-HOURS ARE REQUIRED IN TOTAL FOR SOUNDCHECK, HALF-HOUR FOR LOAD-IN, ONE-HOUR FOR SET-UP AND ONE FOR SOUND, PLUS HALF-HOUR FOR EMERGENCIES.

MORANDI BAND

ANDREI – MAIN VOCAL / PIANO
MIHAI –DJ / GUITAR/ SAMPLER
RELU (RAHOOL) – KEYBOARD
MELAK – PERCUSSION / DRM MACHINE
MAX - FLUTE

THANKS FOR
YOUR TIME HELP

SEE YOU SOON